

A cure for every cancer and excellent care for every patient

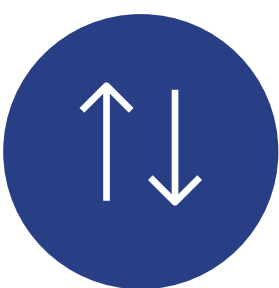
# Innovations with the patient's interests first



## THE CHALLENGE



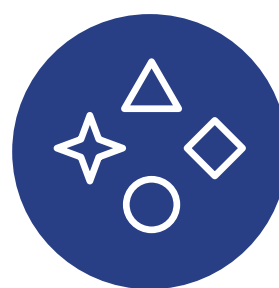
More and more people are **living with cancer**



**Demand for health care is increasing**, number of health care workers is not



IZA focuses on **concentration** and **regional collaboration**



**No equal access** to care in every location

## OUR APPROACH



### PROGRESS THROUGH RESEARCH

The Netherlands Cancer Institute is both a research institute and a hospital. We help solve the cancer problem through groundbreaking research. We innovate by connecting scientific research with the treatment of people with cancer. We treat 40,000 patients per year.



### TAILORED CARE

We strive towards the best outcomes for patients and for our employees – in a challenging context in which the demand for care and treatment is growing while the availability of health care professionals is under pressure. As a result, we must work smarter and together.



### SHARING EXPERTISE

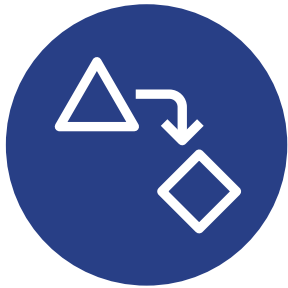
We are a driving force in the expertise network: we share our knowledge and insights with partners in the region, in the Netherlands, and worldwide.

## HOW?



### SUCCESSFUL CROSS-POLLINATION

Our seamless interaction between research and care results in research that truly impacts clinical practice. We are able to do this through our strong fundamental research and treatment covering nearly all cancer types. We closely collaborate, internally and externally, and ensure sustainable funding to accommodate future research.



### CONTINUOUS INNOVATIONS IN HEALTH CARE

By selecting and designing promising (clinical) studies, we improve the daily clinical care and treatment for patients with cancer. These insights drive continuous innovations in the standard of care.

## HOW?



### BETTER OUTCOMES FOR PATIENTS

By continuing to work on better health care that is accessible to everybody and that leads to better outcomes, we can offer our patients tailored care. We provide clear information to our patients so they can be included in the decision-making at every stage of treatment.



### LEARNING, DEVELOPMENT, AND IMPROVEMENT

By providing a comfortable and inspiring work environment in which we facilitate professional development and ensure that everybody matters, employees can feel appreciated and involved. Because health care professionals are scarce, we always make sure that they can fully employ their talents.



### OPTIMIZED & DIGITIZED PROCESSES

By continuously improving our processes together, we achieve the best outcomes and experiences for our patients, and a manageable workload for our staff. We adopt new technologies to improve and accelerate the continuation of care and to exchange information for more seamless collaborations.

## HOW?



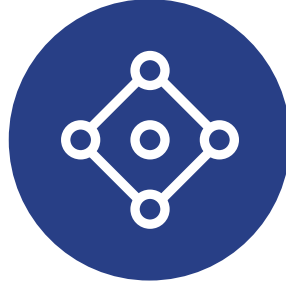
### IMPROVING QUALITY STANDARDS FOR EVERYONE IN THE NETHERLANDS

We improve the quality standard of care through research, and exchange expertise with other hospitals to implement our practice-changing insights. This will improve access to cancer care for everybody in the Netherlands.



### TRAINING AND EDUCATION

Because of our expertise and our innovative education, the next generation of oncological researchers and health care professionals choose our trainings and education programs.



### COLLABORATIONS IN NETWORKS

Through collaborations within the OncoNoVo+ network, involving the Amsterdam UMC, we ensure that care is accessible for every patient in our region. To ensure equal access to the best cancer care in the Netherlands, we also work with policymakers (VWS), national organizations (KWF), and (inter)national knowledge networks (such as IKNL, EU-Life, and OECI).

OUR CORE VALUES:  
**EXCELLENT, GROUNDBREAKING,  
COMMITTED, AND TOGETHER**